

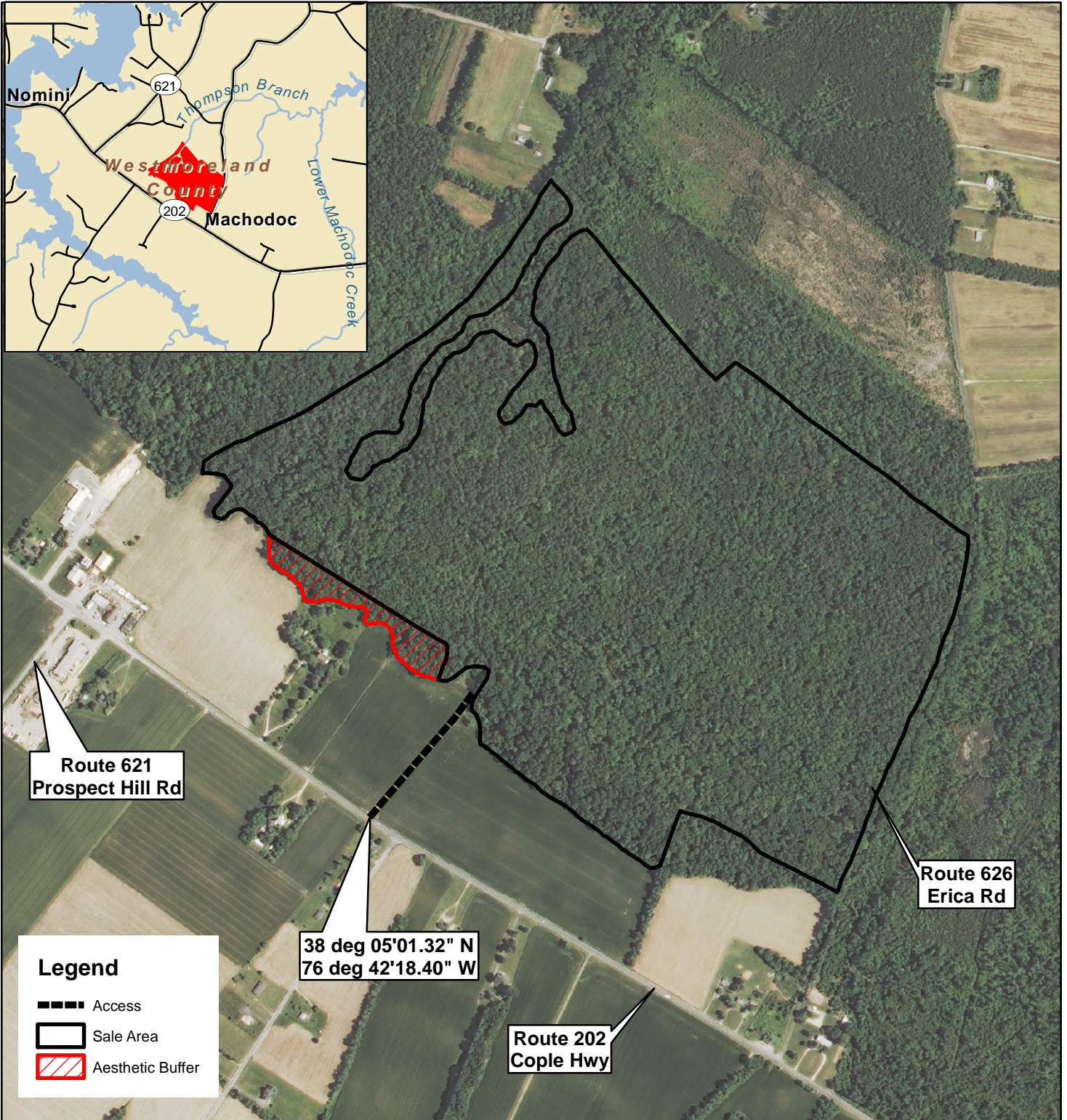
# Spring Grove Tract

Westmoreland County, VA

Sale Area: 172 +/- Acres

F R M, Inc.  
7840 Richmond-Tappahannock Hwy.  
Aylett, VA 23009  
804.769.3948 Office  
804.840.3362 Mobile  
804.769.0853 Fax  
brian@frmva.com

Consulting Foresters  
and  
Timberland Appraisers



Route 621  
Prospect Hill Rd

Route 626  
Erica Rd

Route 202  
Cople Hwy

38 deg 05'01.32" N  
76 deg 42'18.40" W

### Legend

- Access
- Sale Area
- ▨ Aesthetic Buffer

Harvest Boundaries Marked With Blue Paint  
No Harvest From Within SMZ

1 inch = 750 feet

Timber sale at 10 am Thurs., August 17, 2017  
At the Forest Resources Mgmt. Office

BM 7/17/2017